

Product Installation Guidelines & Scope of Use

Version 1.1, 17 March 2025, Page 1 of 5
Document No.: 181.03.34.09

Ezy-Wash® CP-BS Lead Safe™ Hob Mounted Twin Mixer Pre-Rinse Unit Type 84 Flex Tail – Pot Filler Compact

PRODUCT CODE:

- 181.03.34.09



SPECIFICATIONS

- ¼ turn jumper valve hot and cold control tap with 80mm levers
- Stainless steel flexible hose connections with 1/2" BSP female connection on the inlets
- High quality chrome finish for easy cleaning and hygiene maintenance
- Australian Made; therefore, spare parts and support are available locally, reducing costs of down time on maintenance
- This pre-rinse unit has a 6 star WELS rating, the pot filler attachments are 0 star to allow fast pot filling.
- Lead Safe™ brass construction. *

IMPORTANT: All Ezy-Wash® taps are tested in accordance with AS 3718 and leave our premises in good working order.

*Our Lead Safe™ product range is compliant with the Lead Free Requirements of the NCC 2022 Vol. Three, Clause A5G4(2) and NSF/ANSI 372.

**Any flow controller incorporated in the outlet to be tightened to prevent removal by hand. As Per AS3718.

WARNINGS: Special attentions to be paid on notes, photos, images, or drawings of assembly steps marked with the warning symbol.



TECHNICAL DATA

Inlet	G ½" – Female Flexi Tail	
Outlet	Trigger Spray & Pot Filler	
Headworks	Jumper Valve	
Working Pressure Range (kPa)	Min	100
	Max	500
Working Temperature Range (°C)	Min	5
	Max	65
Nominal Flow Rate (LPM)	3.4	
Construction	Brass	
Finish	Chrome	

NOTE: Galvin Engineering continually strives to improve their products. Specifications may change without notice.

TOOLS REQUIRED

- Adjustable spanner
- Hex key
- Power drill

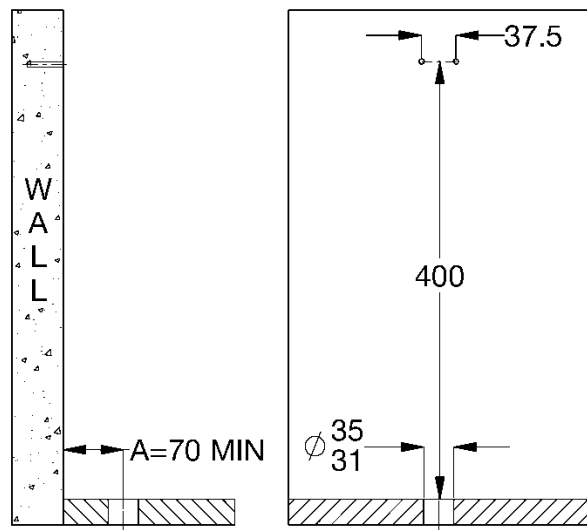
PRE-INSTALLATION

Body:

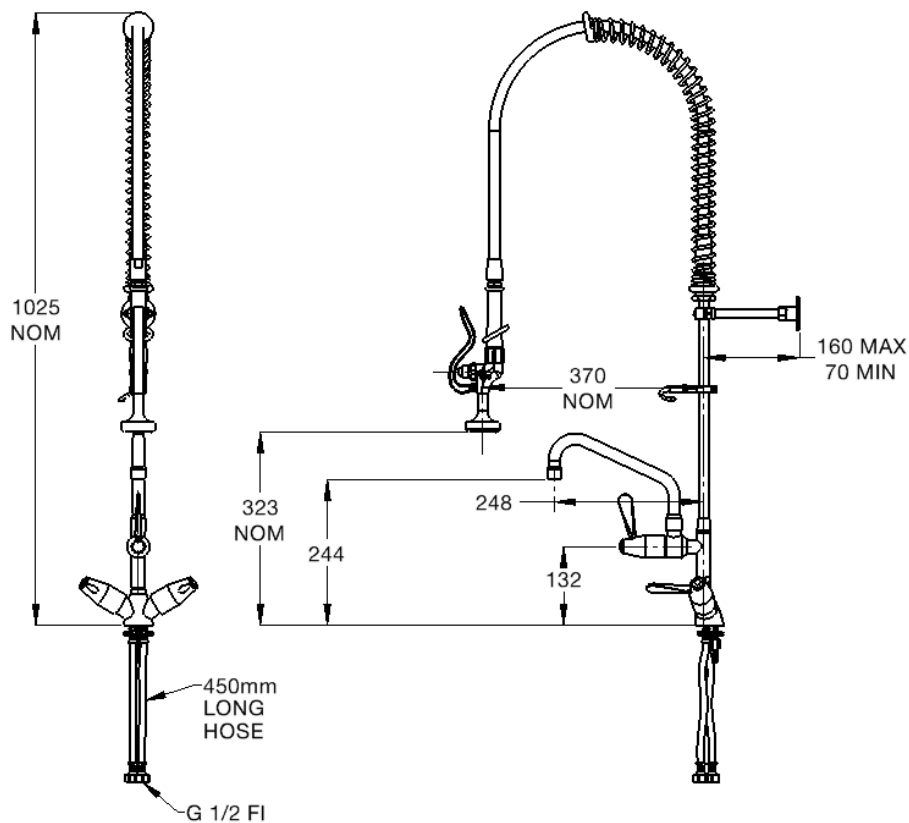
- If the mounting hole does not already exist, mark out and drill the hole in the bench, as shown.
- This model is a single inlet unit requiring a hole diameter of 31 mm - 35mm. Ensure 70mm minimum between wall and hole center as shown "A".
- Maximum bench thickness is 45mm.

Wall Bracket:

- Mark out the two (2) holes for mounting the wall bracket assembly at the height of 400 mm directly up from the bench. Cut out or drill as shown in the image. (Supplied fasteners may not be suitable for the mounting surface. If this is the case, suitable fasteners will need to be sourced by the installer)

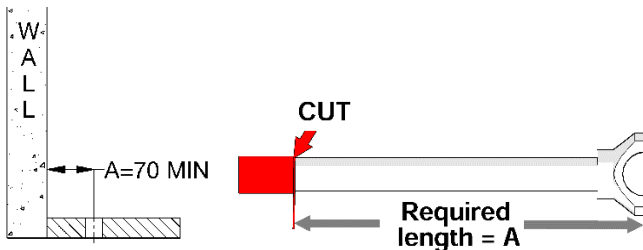


MOUNTING DETAILS



INSTALLATION

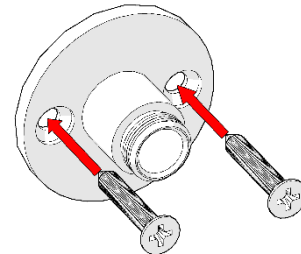
INSTALLATION COMPLIANCE: Galvin Engineering products must be installed in accordance with these installation instructions and in accordance with AS/NZS 3500, the PCA and your local regulatory requirements. Water and/or electrical supply conditions must also comply to the applicable national and/or state standards. Failing to comply with these provisions shall void the product warranty and may affect the performance of the product.



1. Measure and cut support rod

- Measure the distance between the wall mounting surface and the centre line of the drilled hole in the bench/trough (dimension “A”).
- This is the required length of the support rod
⚠ (Required support rod length = A=70mm min.)
- Cut the support rod accordingly. ensure the threaded end is **NOT** cut off.

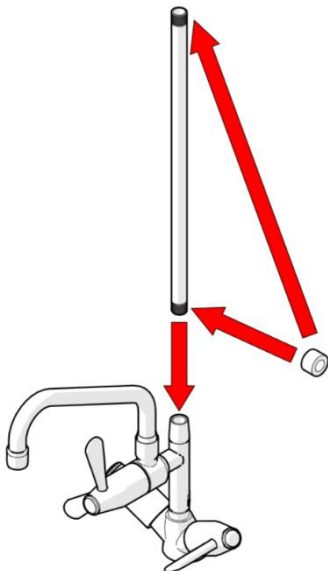
⚠ Note: Distance “A” must be no less than 70mm. The support rod length can be 70mm min. to 160mm max.



2. Fit wall bracket

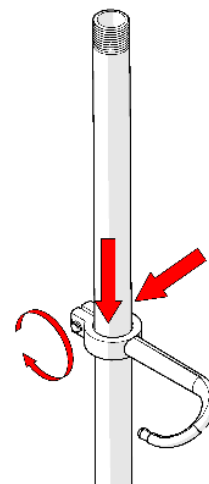
- Secure the wall bracket to the wall.
- Supplied fasteners may not be suitable for the mounting surface. If this is the case, suitable fasteners will need to be sourced.

⚠ Note: The wall bracket must be mounted with two screws for stability and strength. This is critical and failure to do this may void the warranty.

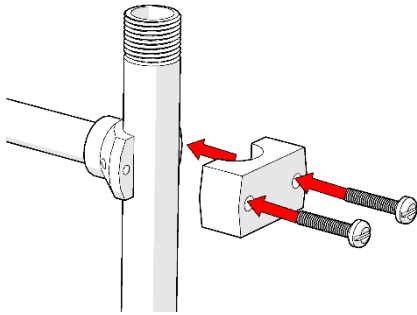


3. Fit pre-rinse riser

- Apply thread tape to both ends of the riser and fit into the mixer body and tighten.

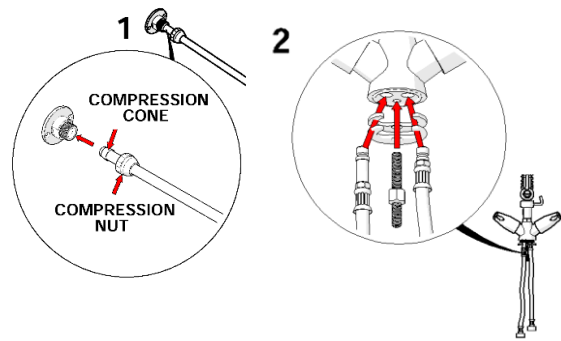


4. Fit hook to riser (as shown)



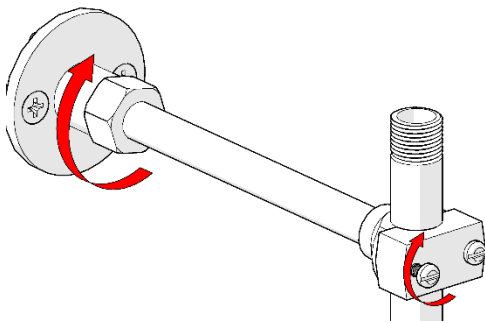
5. Fit support rod

- Fit support rod to the riser and secure the screws as shown, ensure it is not fully tightened.



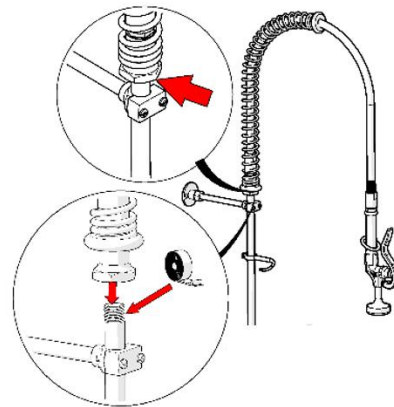
6. Fit pre-rinse assembly

1. Fit compression nut to support rod, followed by the compression cone and locate the support rod into wall bracket.
2. Fit the two supplied flexi hoses into the body.
3. Fit the mixer body through the drilled hole in the bench. Secure body with supplied stud nut, ensuring to use rubber and 'C' washer.



7. Secure support rod

1. Fasten support rod securely against CP riser.
2. Tighten compression nut on wall bracket to secure the support rod. The rod is now rigid.

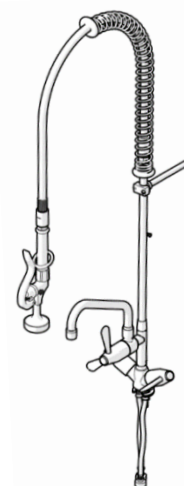


8. Fit hose

- Fit hose to the pre-rinse riser with a spanner, ensure to apply thread tape on the riser.

9. Test unit

- Once all fittings have been tightened securely, connect the unit to the mains water.
- Turn on water and test the unit for any leaks.



WARNINGS

- ⚠ For optimum performance it is recommended that the isolation or mains taps are turned off whilst the unit is not in use (overnight etc.), so that the unit is not under mains pressure when unsupervised. Flood damage may occur if a failure occurs whilst the unit is under mains pressure (warranty is void in this instance).
- ⚠ Galvin Engineering recommends that the handpiece is periodically serviced by a qualified plumber.
- ⚠ **IMPORTANT:**
To seal the hose this unit uses Loctite 577 which is a thread sealant approved for use with potable water (AS/NZS 4020). If hose is to be removed for maintainance purposes, reseal the joints with Loctite 577, or an equivalent sealant compliant with AS/NZS 4020. Do not use thread tape to seal the hose connections, as this may cause the hose nut to become loosened over time and leak.

WARRANTY

Galvin Engineering products are covered under our Manufacturer's Warranty. Galvin Engineering products must be installed in accordance with the installation instructions and in accordance with AS 3500 and NCC Volume Three, relevant Australian Standards and local authorities applicable to product being installed. Water and electrical supply conditions must also comply to the applicable national and/or state standards, failing to comply with these provisions may void the product warranty and affect performance of the product.

Please visit www.galvinengineering.com.au to view the full warranty, our Installation Compliance and Maintenance & Cleaning information as well as any other additional information.

Within Australia: 1300 514 074 Outside Australia: P: +61 (0)8 9338 2344

F: +61 (0)8 9338 2340

sales@galvinengineering.com.au

www.galvinengineering.com.au

ABN: 78 008 719 382

PERTH | SYDNEY | MELBOURNE | BRISBANE | ADELAIDE

